



48 Thurlow Close, Highams Park, London, E4 9XE

Offers Over £310,000

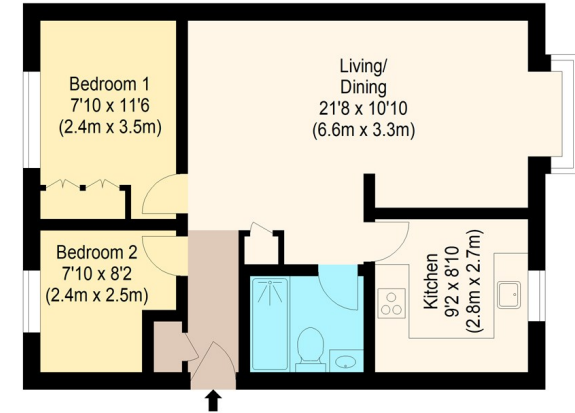
2 Bedrooms / 1 Reception / 1 Bathrooms

584.00 sq ft

Apartment

Council Tax Band: B

Local Authority: Waltham Forest London Borough



First Floor

william rose
Thurlow Close, E4

Approximate Gross internal Floor Area : 54.22 sq m / 584 sq ft



Measured according to RICS IPMS2. Floor plan is for illustrative purposes only and is not to scale. Every attempt has been made to ensure the accuracy of the floor plan shown, however all measurements, fixtures, fittings and data shown are an approximate interpretation for illustrative purposes only. 1 sq m = 10.76 sq feet.

Date: 8/1/2024



Key Features:

- Two bedrooms
- First floor
- New lease with zero ground rent
- Well maintained
- Ultra-fast broadband internet
- Amazing communal gardens
- Allocated parking
- Secure entry system
- Short walk to Highams Park Station
- Popular development



Energy Efficiency Rating		
	Current	Potential
Very energy efficient - lower running costs		
(92 plus) A		
(81-91) B		
(69-80) C		
(55-68) D		
(39-54) E		
(21-38) F		
(1-20) G		
Not energy efficient - higher running costs		
England & Wales EU Directive 2002/91/EC		

